



SERIES: P22

Dial: 1½", 2", 2½", 4", 6", 8", 10"
Accuracy: 0.5%, 1.0%, 1.6%, 2.5%

DESCRIPTION

Indumart P22 Series Fillable Stainless Steel Pressure Gauges are ideal for harsh environment and corrosive media. Because of their robust design, these heavy duty gauges meet stringent demands and bring the advantages of high accuracy, long-term stability and protection against water jets and dust on the moving parts.

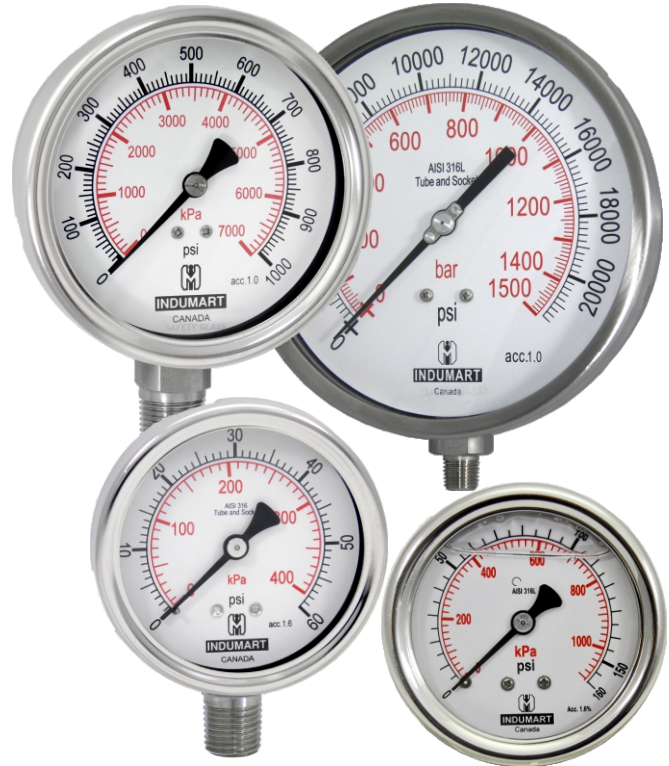
These heavy duty pressure gauges are used at measuring points with high dynamic alternating loads and strong vibrations and pulses. They may be filled with glycerin or silicon oil to ensure smooth pointer movement and to provide lubrication of the moving parts protecting the measuring system against wear.

Optionally, the P22 Series may be ordered with monel wetted parts (4" & 6" dials) and/or various types of wall and panel mounting configurations, such as front or back flange and U-bracket.

SPECIFICATIONS

Connection	Back or bottom
Case	Stainless steel
Element	316 st. steel bourdon tube
Protection	IP65
Range (not available for all dials)	0...10 to 0...20000 psi; 0...60 to 0...160000 kPa; 0...0.6 to 0...1600 bar Vacuum & compound ranges* Receiver gauges with linear or Sq. root scales are available.

* Maximum range for 2" and 2½" dial is 15000 psi (1000 bar, 100000 kPa).
* Maximum range for 1½" dial is 9000 psi (600 bar, 60000 kPa).

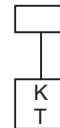


ORDER CODES

Model P22

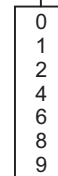
CONNECTION

Back
Bottom



DIAL SIZE

- 40 mm (1½")
- 50 mm (2")
- 63 mm (2½")
- 100 mm (4")
- 160 mm (6")
- 200 mm (8")
- 250 mm (10")



OPTIONS (more than one option may be selected)

- Glycerine Filling
- Silicon Filling
- 0.5% Accuracy (4", 6", 8" & 10" dials only)
- 316 St. steel Case & Bezel
- Safety Glass (4", 6", 8" & 10" dials only)
- Monel K400 Wetted Parts (4" & 6" only)
- ¼" Process Connection (4", 6", 8" and 10" dial only)
- BSP Thread
- Back Flange for wall mounting (not 1½ & 2" dials)
- Front Flange for panel mounting (not 1½ & 2" dials)
- U-bracket for panel mounting



Example: P22T4-FG,IM,TR,MF

Size	1½" (40 mm)	2" (50 mm)	2½" (63 mm)	4" (100 mm)	6" (160 mm)	8" (200 mm)	10" (250 mm)
Accuracy*	2.5%		1.6%	1.0% (0.5% option)		1.0% (0.5% option)	
Window	Glass (Plexiglas for filled version)		Plexiglas	Glass (safety glass as option)			
Bezel	Push fit			Bayonet			
Pointer	Fixed			Micrometer Adjustment		Slotted "O" Adjustment	
Thread	⅜" NPT (BSP option)	¼" NPT (BSP Thread as option)		½" NPT (¼" NPT and/or BSP Thread as option)			
Fluid Temp.*	180°C max.		270°C max.	300°C max.		270°C max.	

* Varies for the filled gauges. Please enquire.

Specifications may change without prior notice.